



Part List, HVC/Electrical

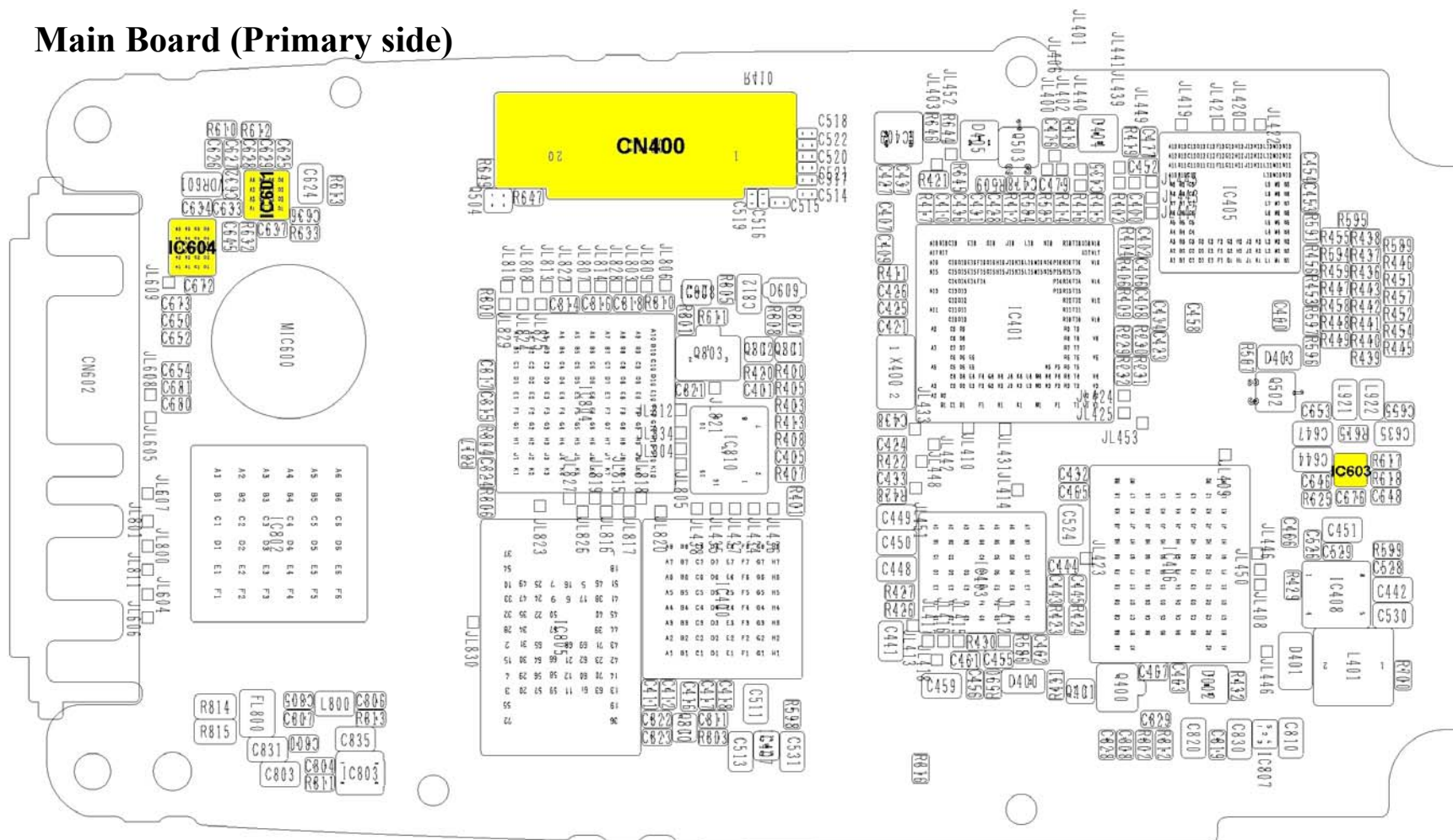
Applicable for Z600/Z608

1	Mounting Drawings	2
1.1	Main Board (Primary side).....	2
1.2	Main Board (Secondary side).....	3
1.3	Antenna Board (Primary side).....	4
1.4	Antenna Board (Secondary side).....	5
1.5	Main Board, ROA A3622636A.....	6
1.6	Antenna Board.....	6
2	Revision History	7

1 Mounting Drawings

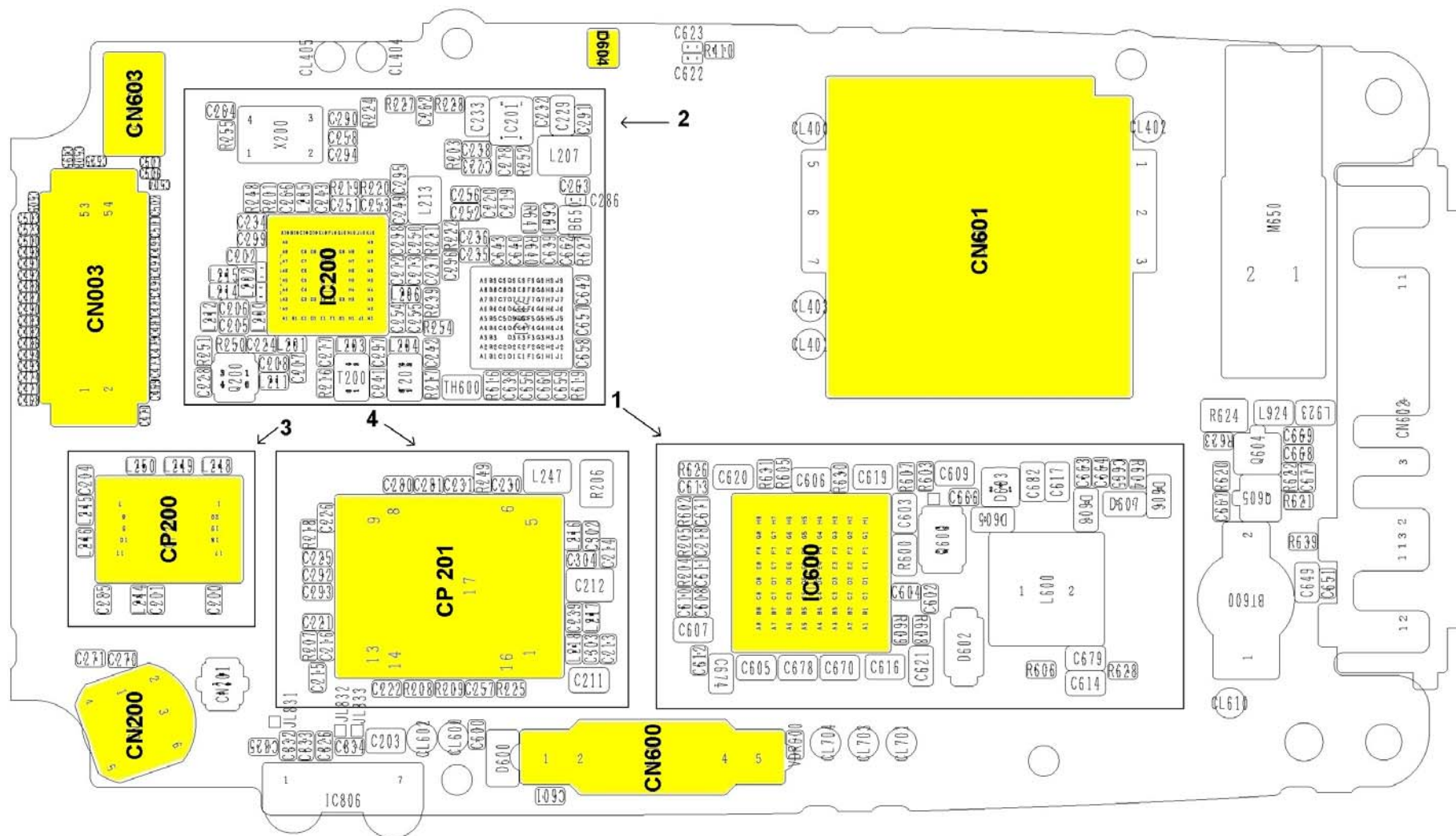
The Mounting drawings shows the components position on the printed board.

1.1 Main Board (Primary side)



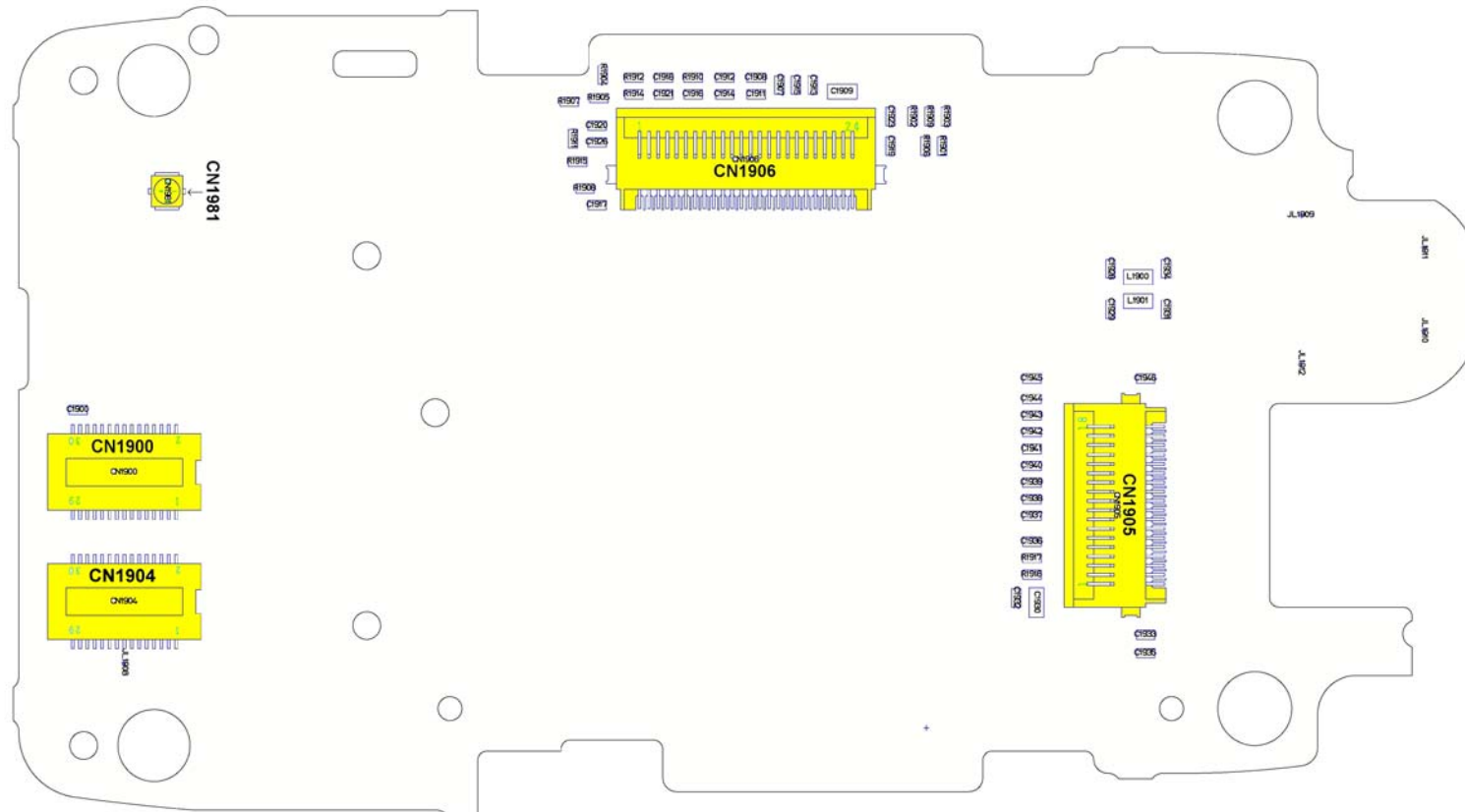


1.2 Main Board (Secondary side)



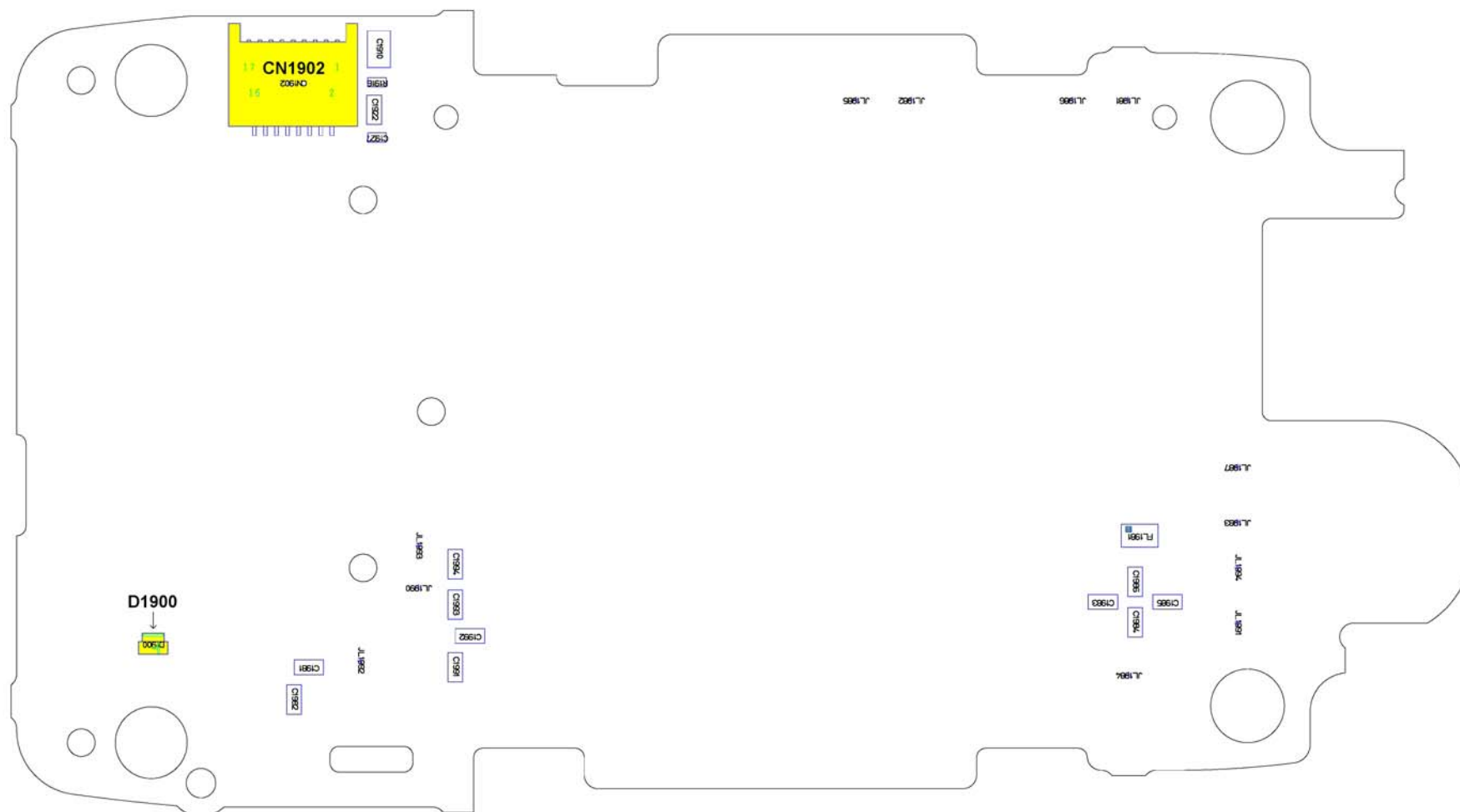


1.3 Antenna Board (Primary side)





1.4 Antenna Board (Secondary side)





1.5 Main Board, ROA A3622636A

Contains only components that are possible to replace on the main board.

Pos. number refers to the components position number on the board.

Parts available to order will be found in the Web Shop.

Pos.	Description	Part Number	Comments
1	LID, BB	S/3-258-143-01	
2	LID, RF1	S/3-258-139-01	
3	LID, RF SW	S/3-258-141-02	
4	LID, RF PA	S/3-258-137-01	
CN200	RF COAXIAL CONNECTOR (Ext. ant. Connector)	S/1-817-774-21	
CN603	POGO PIN (2PIN) FOR LOUDSPEAKER CONN.	S/1-780-059-21	
CN600	BATTERY CONNECTOR	S/1-817-455-41	
CN601	SIM READER	S/1-817-781-21	
D604	RED/GREEN LED FOR BATTERY CHARGER	S/6-500-774-01	
CN003	B2B CONNECTOR 54PIN SOCKET	S/1-817-779-21	
CN400	FPC-CNC 20PIN FOR KEY BOARD	S/1-817-775-21	
IC601	Audio I/O buffer, Tjatte	S/6-705-079-01	
IC604	Digital I/O buffer, Knatte	S/6-705-078-01	
IC603	Audio amp	S/6-705-284-01	
IC200	RF Transceiver, Ingela	S/6-705-341-01	Radio Calibration*
CP201	Power amplifier	S/6-600-298-01	Radio Calibration*
CP200	Front end module, Antenna switch	S/1-478-364-21	Radio Calibration*
IC600	Power supply, Victoria	S/6-705-082-01	Radio Calibration*

*Calibration in SERP can only be done by authorized repair centers.

1.6 Antenna Board

Contains only components that are possible to replace on the main board.

Pos. number refers to the components position number on the board.

Parts available to order will be found in the Web Shop.

Pos.	Description	Part Number	Comments
CN1981	RF CNC INTERNAL	S/1-817-772-21	Antenna board
D1900	SIDEFIRE BLUE LED FOR SUB-LCD	S/6-500-803-01	Antenna board
CN1906	FPC-CNC 24PIN FOR MAIN LCD FPC	S/1-817-777-21	Antenna board
CN1905	FPC-CNC 18PIN FOR CAMERA FPC	S/1-817-776-21	Antenna board
CN1900	B2B CONNECTOR 30PIN SOCKET	S/1-817-773-21	Antenna board
CN1904	B2B CONNECTOR 30PIN SOCKET	S/1-817-773-21	Antenna board
CN1902	FPC-CNC 17PIN FOR SUB-LCD	S/1-816-657-21	Antenna board



2 Revision History

Rev.	Date	Changes / Comments
A	2003-09-15	First release
B	2003-09-26	Lid rf sw number updated
C	2003-10-07	Numbers updated